

**Mountain View Community Shuttle**

# **Operational Statistics Summary**

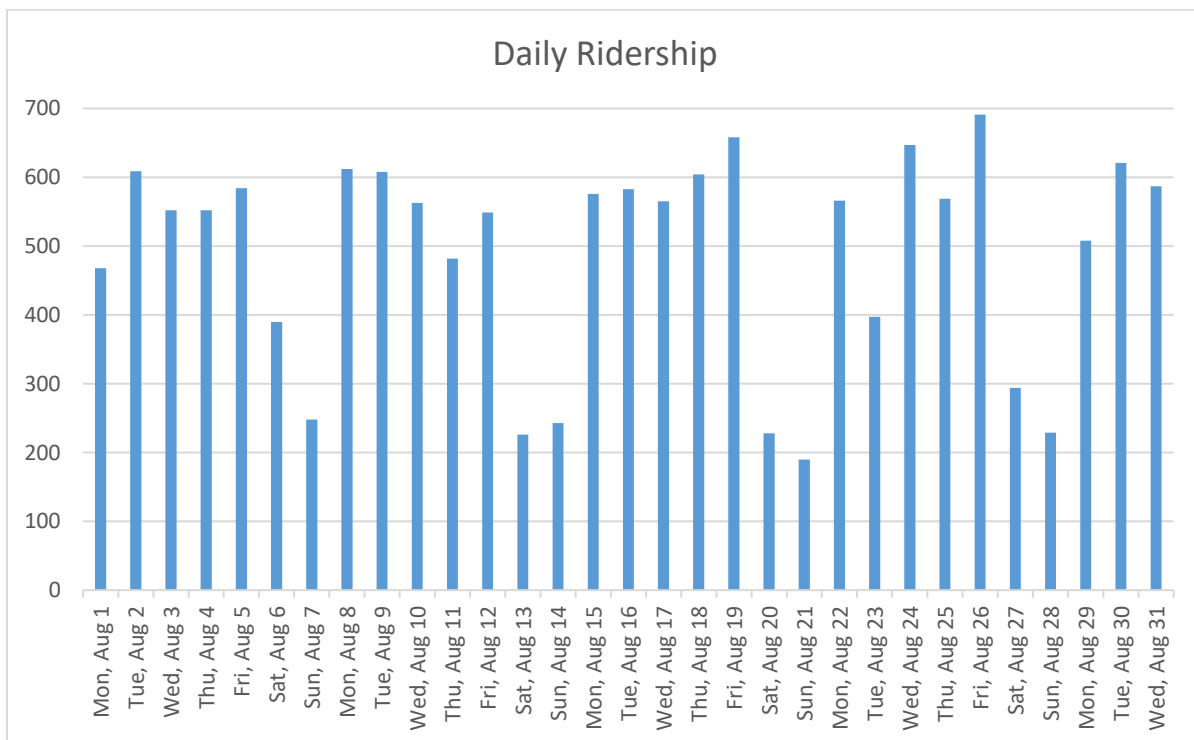
**September 2016**

**Data and Report Compiled by ALTRANS and Google**

## Ridership Highlights, August 2016

Metrics	Passengers
Total Boarding	15,199
Weekday	13,151
Weekend	2,048
Average Ridership	491
Peak Daily Ridership	691
Average Weekday	572
Average Weekend	256

## Passengers per day, August 2016

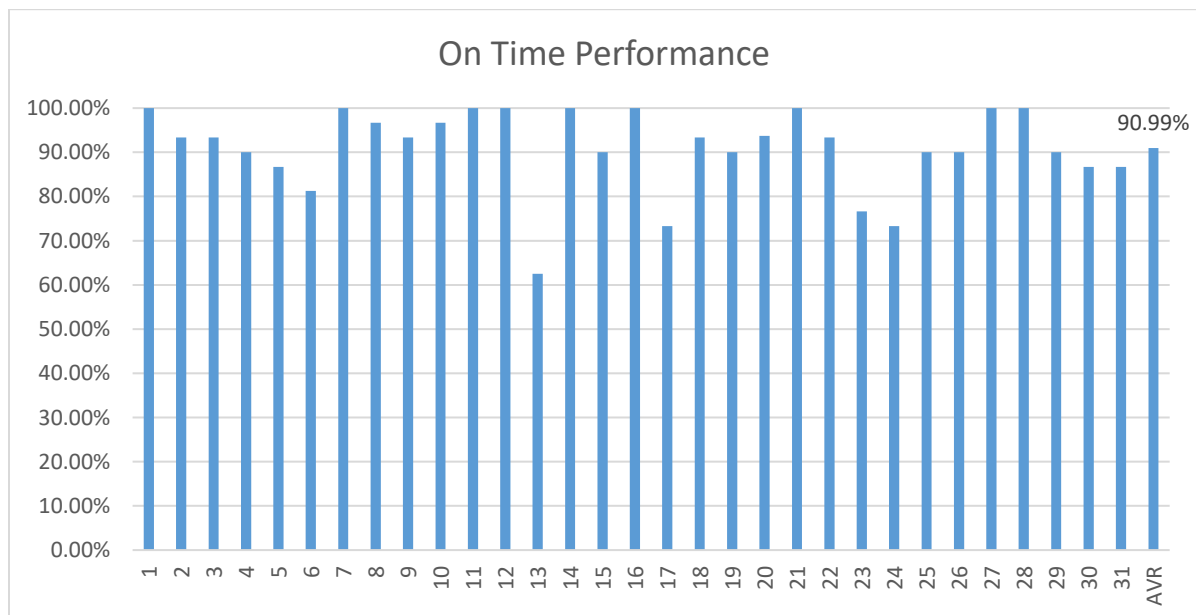


## Calendar YTD Ridership Data

	Monthly Ridership		Weekday Totals		Weekend Totals	
	2015	2016	2015	2016	2015	2016
<b>JAN</b>	N/A	8,899	N/A	7,239	N/A	1,661
<b>FEB</b>	6,595	10,349	5,683	8,850	912	1,499
<b>MAR</b>	9,416	11,729	8,154	10,492	1,262	1,236
<b>APR</b>	8,069	11,149	7,087	9,555	982	1,594
<b>MAY</b>	7,629	12,340	6,083	10,480	1,546	1,860
<b>JUN</b>	8,787	12,345	7,656	10,604	1,131	1,741
<b>JUL</b>	8,631	13,248	7,227	10,614	1,404	2,636
<b>AUG</b>	9,456	15,199	7,981	13,151	1,475	2,048
<b>SEP</b>	8,993		7,863		1,130	
<b>OCT</b>	9,431		8,118		1,313	
<b>NOV</b>	8,350		6,812		1,538	
<b>DEC</b>	8,329		7,153		1,176	

Ridership	2015	2016
<b>YTD</b>	<b>97,079</b>	<b>95,291</b>

## On-Time Performance, August 2016



## Month Total Use (Boarding & Alighting) by Stops, August 2016 \*

GRAY Route		
San Antonio Center	2,629	16.3%
Grant Rd.	1,701	10.6%
MV Transit Center	1,286	8.0%
Senior/Teen Center	873	5.4%
Sylvan Park	767	4.8%
Rengstorff/Middlefield	647	4.0%
Civic Center	646	4.0%
Middlefield/Easy	588	3.7%
Rengstorff/Montecito	524	3.3%
Shoreline/Middlefield #3	487	3.0%
Whisman/Middlefield	466	2.9%
Graham Middle School	463	2.9%
Community Center	437	2.7%
Middlefield/Terra Bella	413	2.6%
Cuesta/Miramonte	404	2.5%
El Camino Real/Sylvan	392	2.4%
Castro/El Camino Real	378	2.3%
El Camino Hospital	364	2.3%
Whisman Station	323	2.0%
Villa/Shoreline	313	1.9%
Middlefield/Moffett	302	1.9%
Cuesta/Grant	290	1.8%
California/Rengstorff	283	1.8%
California/Ortega	246	1.5%
California/Ortega	221	1.4%
Grant/Eunice	199	1.2%
Villa/Franklin	194	1.2%
Cuesta/Grant	154	1.0%
Shoreline/Pear	81	0.5%
Shoreline/Middlefield #2	17	0.1%
<b>Total</b>	<b>16,088</b>	<b>100.0%</b>

## Month Total Use (Boarding & Alighting) by Stops, August 2016 \*

RED Route		
San Antonio Center	2,498	17.8%
MV Transit Center	1,384	9.9%
Grant Rd.	1,183	8.4%
Senior/Teen Center	998	7.1%
Civic Center	756	5.4%
Rengstorff/Middlefield	735	5.2%
Sylvan Park	548	3.9%
El Camino Real/Sylvan	512	3.6%
California/Ortega	443	3.2%
California/Rengstorff	418	3.0%
El Camino Hospital	400	2.8%
Middlefield/Easy	370	2.6%
Community Center	323	2.3%
Whisman Station	321	2.3%
Middlefield/Terra Bella	306	2.2%
Rengstorff/Montecito	304	2.2%
Graham Middle School	281	2.0%
Middlefield/Moffett	276	2.0%
Villa/Mariposa	251	1.8%
California/Rengstorff	249	1.8%
Cuesta/Miramonte	230	1.6%
Whisman/Middlefield	229	1.6%
Villa/Franklin	224	1.6%
Shoreline/Middlefield #1	209	1.5%
California/Ortega	156	1.1%
Grant/Eunice	147	1.0%
Shoreline/Pear	118	0.8%
Cuesta/Grant	111	0.8%
Castro/El Camino Real*	54	0.4%
Shoreline/Middlefield #2	15	0.1%
<b>Total</b>	<b>14,049</b>	<b>100.0%</b>

## Additional Ridership Data

The number of bicycles carried in August: **329**

Number of wheelchair lift usage in August: **36**

## Website Usage, August 2016

Number of unique visitors to web-site: 2,610

Mobile – 51%

Desktop – 44%

Tablet – 5%

---

\*Service to Shoreline/ Pear and Middlefield/ Shoreline # 2 stops is provided on weekends/holidays only.