

**Mountain View Community Shuttle**

# **Operational Statistics Summary**

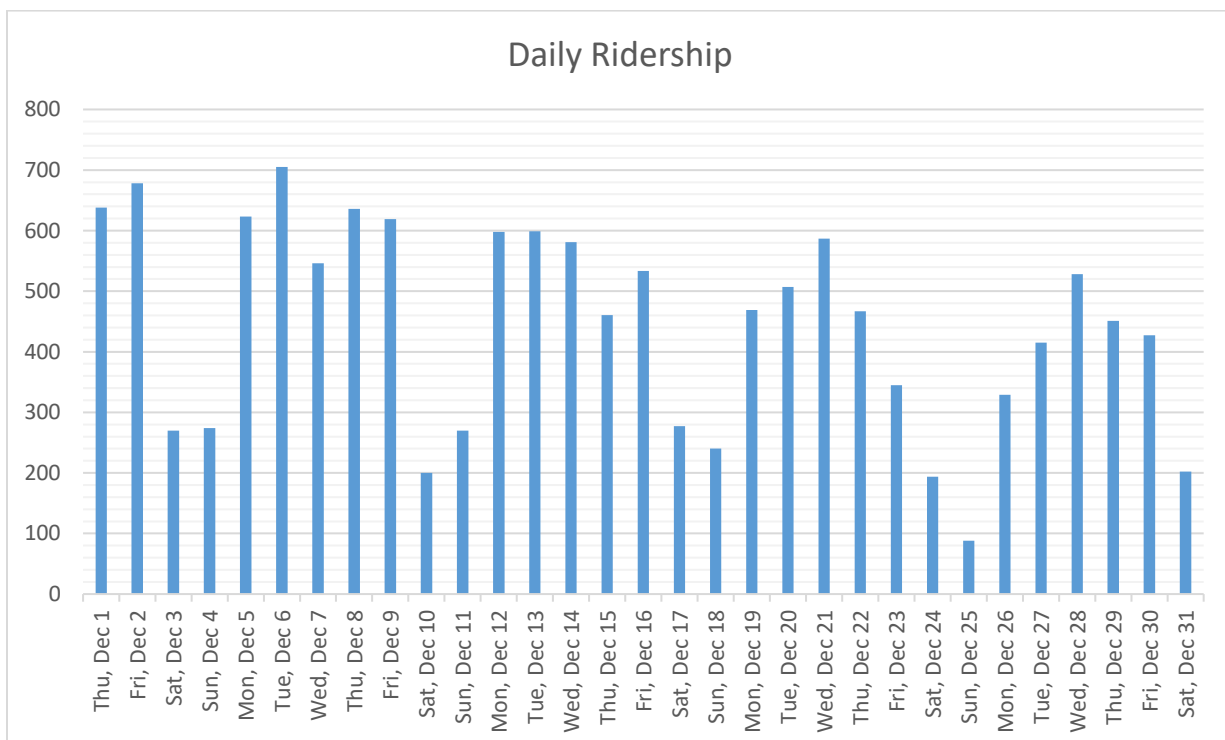
**January 2017**

**Data and Report Compiled by ALTRANS and Google**

## Ridership Highlights, December 2016

Metrics	Passengers
Total Boarding	13,758
Weekday	11,743
Weekend	2,015
Average Ridership	437
Peak Daily Ridership	705
Average Weekday	534
Average Weekend	224

## Passengers per day, December 2016

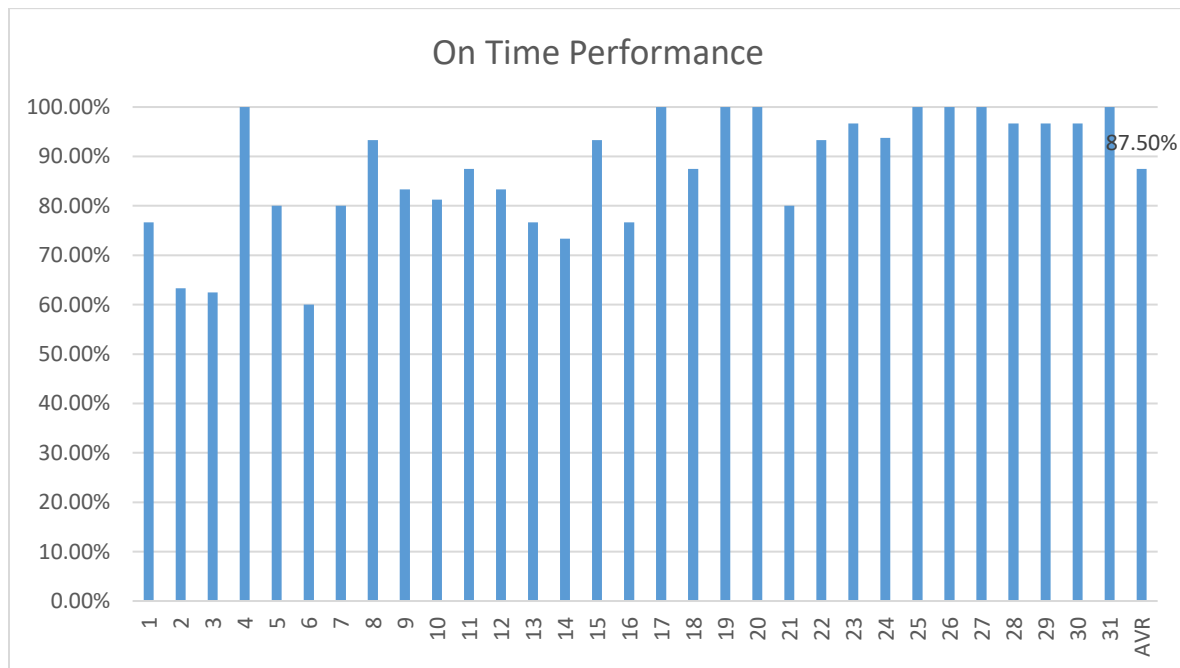


## Calendar YTD Ridership Data

	Monthly Ridership		Weekday Totals		Weekend Totals	
	2015	2016	2015	2016	2015	2016
<b>JAN</b>	N/A	8,899	N/A	7,239	N/A	1,661
<b>FEB</b>	6,595	10,349	5,683	8,850	912	1,499
<b>MAR</b>	9,416	11,729	8,154	10,492	1,262	1,236
<b>APR</b>	8,069	11,149	7,087	9,555	982	1,594
<b>MAY</b>	7,629	12,340	6,083	10,480	1,546	1,860
<b>JUN</b>	8,787	12,345	7,656	10,604	1,131	1,741
<b>JUL</b>	8,631	13,248	7,227	10,614	1,404	2,636
<b>AUG</b>	9,456	15,199	7,981	13,151	1,475	2,048
<b>SEP</b>	8,993	14,710	7,863	12,645	1,130	2,065
<b>OCT</b>	9,431	14,959	8,118	12,489	1,313	2,470
<b>NOV</b>	8,350	15,002	6,812	12,478	1,538	2,524
<b>DEC</b>	8,329	13,758	7,153	11,743	1,176	2,015

<b>Ridership</b>	<b>2015</b>	<b>2016</b>
<b>YTD</b>	<b>97,079</b>	<b>153,720</b>

## On-Time Performance, December 2016



## Month Total Use (Boarding & Alighting) by Stops, December 2016 \*

GRAY Route		
San Antonio Center	2,993	21%
MV Transit Center	1,254	9%
Grant Rd.	1,070	8%
Senior/Teen Center	923	7%
Rengstorff/Middlefield	717	5%
Civic Center	665	5%
Middlefield/Easy	474	3%
Sylvan Park	458	3%
Middlefield/Terra Bella	445	3%
Community Center	405	3%
El Camino Real/Sylvan	392	3%
El Camino Hospital	383	3%
Cuesta/Miramonte	372	3%
Middlefield/Moffett	369	3%
Whisman Station	322	2%
California/Rengstorff	313	2%
California/Ortega	311	2%
Rengstorff/Montecito	310	2%
Graham Middle School	275	2%
Whisman/Middlefield	274	2%
Shoreline/Middlefield #3	273	2%
Castro/El Camino Real	240	2%
California/Ortega	236	2%
Rengstorff/Central	134	1%
Villa/Franklin	120	1%
Cuesta/Grant	75	1%
Grant/Eunice	70	0%
Villa/Shoreline	61	0%
Shoreline/Pear	51	0%
Cuesta/Grant	42	0%
Shoreline/Middlefield #2	9	0%
<b>Total</b>	<b>14,028</b>	<b>100%</b>

## Month Total Use (Boarding & Alighting) by Stops, December 2016 \*

RED Route		
San Antonio Center	2,659	20%
MV Transit Center	1,414	11%
Grant Rd.	1,142	9%
Senior/Teen Center	884	7%
Rengstorff/Middlefield	688	5%
Civic Center	616	5%
California/Ortega	454	3%
El Camino Real/Sylvan	449	3%
El Camino Hospital	427	3%
California/Rengstorff	408	3%
Sylvan Park	386	3%
Whisman Station	370	3%
Middlefield/Terra Bella	368	3%
Community Center	305	2%
Middlefield/Easy	276	2%
Middlefield/Moffett	270	2%
Cuesta/Miramonte	259	2%
Rengstorff/Montecito	241	2%
Villa/Mariposa	222	2%
Villa/Franklin	204	2%
California/Rengstorff	192	1%
Whisman/Middlefield	188	1%
Castro/El Camino Real	175	1%
Graham Middle School	160	1%
Shoreline/Middlefield #1	132	1%
California/Ortega	131	1%
Grant/Eunice	114	1%
Cuesta/Grant	83	1%
Rengstorff/Central	68	1%
Shoreline/Pear	43	0%
Shoreline/Middlefield #2	13	0%
<b>Total</b>	<b>13,333</b>	<b>100%</b>

## Additional Ridership Data

The number of bicycles carried in December: **175**

Number of wheelchair lift usage in December: **18**

## Website Usage, December 2016

Number of new visitors to web-site: 2,452

Mobile – 54%

Desktop – 41%

Tablet – 4%

---

\*Service to Shoreline/ Pear and Middlefield/ Shoreline # 2 stops is provided on weekends/holidays only.