

Mountain View Community Shuttle

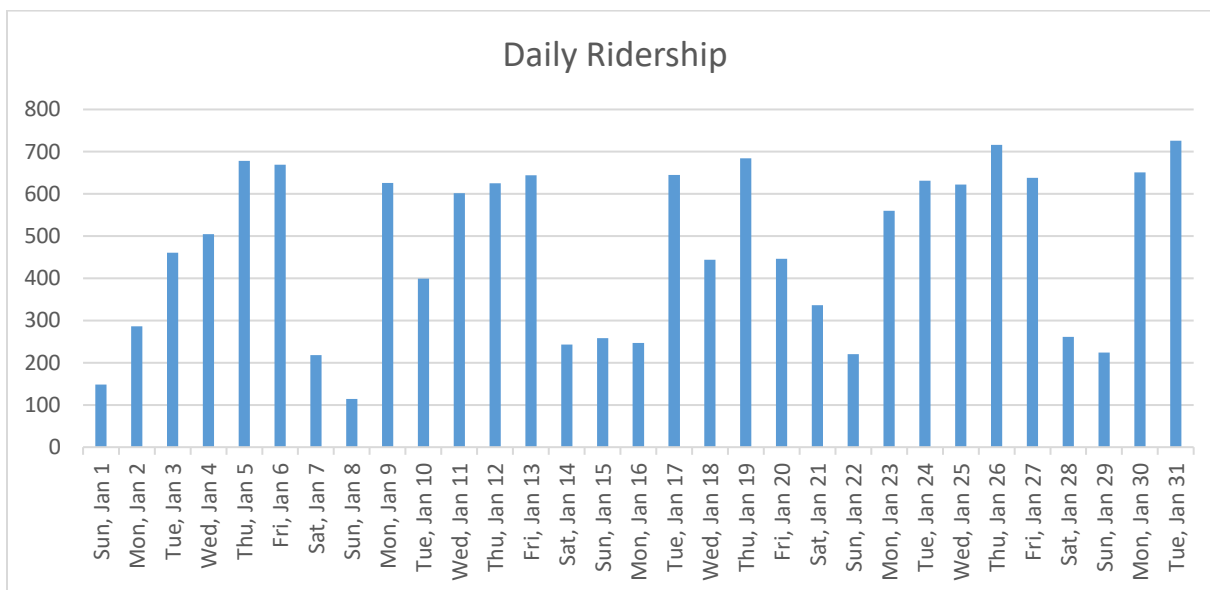
Operational Statistics Summary

Data and Report Compiled by ALTRANS and Google

Ridership Highlights, January 2017

Metrics	Passengers
Total Boarding	14,527
Weekday	12,258
Weekend	2,269
Average Ridership	469
Peak Daily Ridership	726
Average Weekday	584
Average Weekend	227

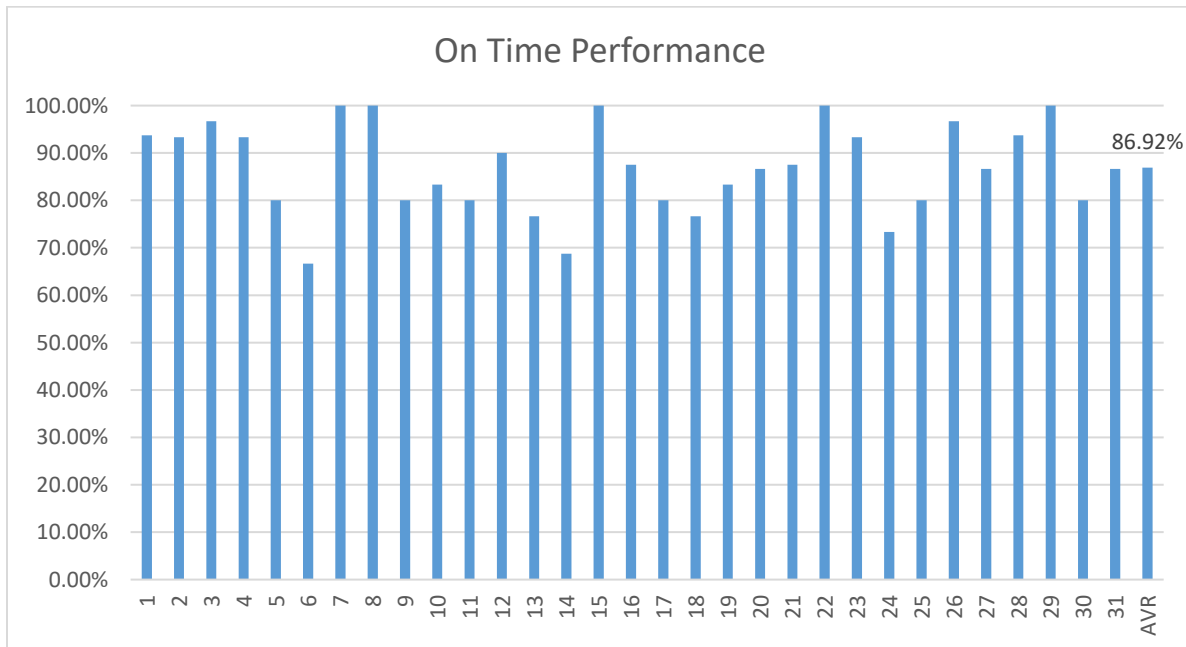
Passengers per day, January 2017



Calendar YTD Ridership Data

	Total/2016	Total/2017	% change	Weekday Totals/ 2016	Weekday Totals/ 2017	% change	Weekend Totals/ 2016	Weekend Totals/ 2017	% change
January	8,899	14,527	63%	7,239	12,258	69%	1,660	2,269	37%
February	10,349			8,850			1,499		
March	11,728			10,492			1,236		
April	11,168			9,555			1,594		
May	12,355			10,480			1,860		
June	12,345			10,604			1,741		
July	13,248			10,614			2,634		
August	15,199			13,151			2,048		
September	14,710			12,645			2,065		
October	14,959			12,489			2,470		
November	14,820			12,478			2,524		
December	13,758			11,743			2,015		
Year to Date	153,720	14,527							

On-Time Performance, January 2017



Month Total Use (Boarding & Alighting) by Stops, January 2017 *

GRAY Route		
San Antonio Center	2,872	19.54%
Grant Rd.	1,247	8.49%
MV Transit Center	1,186	8.07%
Senior/Teen Center	1,015	6.91%
Civic Center	730	4.97%
Middlefield/Terra Bella	701	4.77%
Rengstorff/Middlefield	632	4.30%
Middlefield/Easy	588	4.00%
Middlefield/Moffett	516	3.51%
Sylvan Park	430	2.93%
Graham Middle School	425	2.89%
El Camino Real/Sylvan	408	2.78%
California/Ortega	372	2.53%
El Camino Hospital	369	2.51%
Community Center	351	2.39%
Whisman Station	338	2.30%
California/Rengstorff	328	2.23%
Cuesta/Miramonte	326	2.22%
Whisman/Middlefield	315	2.14%
Rengstorff/Central	266	1.81%
California/Ortega	231	1.57%
Rengstorff/Montecito	217	1.48%
Castro/El Camino Real	207	1.41%
Shoreline/Middlefield #3	158	1.08%
Villa/Shoreline	111	0.76%
Villa/Franklin	87	0.59%
Cuesta/Grant	80	0.54%
Shoreline/Pear	78	0.53%
Grant/Eunice	56	0.38%
Cuesta/Grant	47	0.32%
Shoreline/Middlefield #2	7	0.05%
Total	14,694	100.00%

Month Total Use (Boarding & Alighting) by Stops, January 2017 *

RED Route		
San Antonio Center	2,531	17.92%
MV Transit Center	1,304	9.23%
Grant Rd.	1,245	8.81%
Senior/Teen Center	952	6.74%
Civic Center	697	4.93%
Rengstorff/Middlefield	670	4.74%
California/Ortega	486	3.44%
El Camino Real/Sylvan	478	3.38%
El Camino Hospital	477	3.38%
Middlefield/Terra Bella	473	3.35%
Sylvan Park	461	3.26%
California/Rengstorff	381	2.70%
Whisman Station	351	2.49%
Community Center	335	2.37%
California/Rengstorff	333	2.36%
Middlefield/Easy	327	2.32%
Middlefield/Moffett	327	2.32%
Graham Middle School	251	1.78%
Cuesta/Miramonte	237	1.68%
Villa/Mariposa	221	1.56%
Rengstorff/Montecito	214	1.52%
Villa/Franklin	198	1.40%
Castro/El Camino Real	194	1.37%
Whisman/Middlefield	179	1.27%
Shoreline/Middlefield #1	178	1.26%
California/Ortega	162	1.15%
Rengstorff/Central	146	1.03%
Grant/Eunice	130	0.92%
Shoreline/Pear	86	0.61%
Cuesta/Grant	82	0.58%
Shoreline/Middlefield #2	18	0.13%
Total	14,124	100.00%

Additional Ridership Data

The number of bicycles carried in January: **167**

Number of wheelchair lift usage in January: **12**

Website Usage, January 2017

Number of new visitors to web-site: 2,289

Mobile – 54%

Desktop – 41%

Tablet – 5%

*Service to Shoreline/ Pear and Middlefield/ Shoreline # 2 stops is provided on weekends/holidays only.